

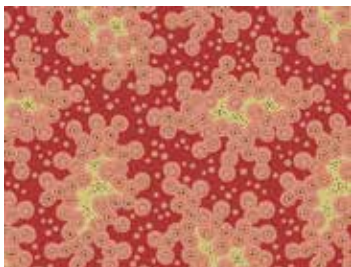
Maling Road

BY DI FORD-HALL



Primarily Patchwork
Quilt designed by:
Di Ford-Hall

Quilt Size: **62" x 62"**
andoverfabrics.com



About Maling Road

Maling Road is the main road of the most charming shopping village in Melbourne, Australia. It was where my quilt shop, Primarily Patchwork, was located. The shop was on Theatre Place and was part of the landmark theatre built in the late 1800s. On this tiny street, you could find me six days a week for 24 years. — *Di Ford-Hall*

andover



makower uk
The Henley Studio

Free Pattern Download Available

1384 Broadway New York, NY 10018
Tel. (800) 223-5678 • andoverfabrics.com

Primarily Patchwork Quilt



Introducing Andover Fabrics new collection: **MALING ROAD** by Di Ford-Hall

Quilt designed by Di Ford-Hall

Quilt finishes 62" x 62"

Reproduction prints, including one with printed Grandmother's Flower Garden hexagons, make this medallion-set wall quilt reminiscent of a quilt made in the British Commonwealth decades ago. A softly romantic palette and variety of scale add great interest to this easy-to-piece quilt.

Fabric Requirements

		Yardage	Fabric
Fabric A	center	5/8 yard	8717-R
Fabric B	border 2	fat 1/4 yard	8718-RB
Fabric C	border 6	2 yards	8719-NT
Fabric D	border 2	fat 1/4 yard	8720-N
Fabric E	border 3	1/2 yard	8721-B
Fabric F	border 4	5/8 yard	8722-BE
Fabric G	border 2	fat 1/4 yard	8723-N
Fabric H	border 1	3/8 yard	8724-R
Fabric I	border 2	fat 1/4 yard	8724-RN
Fabric J	border 3	fat 1/4 yard	8725-N
Fabric K	binding	5/8 yard	8726-N
Fabric L	border 4	fat 1/4 yard	8727-NR
Fabric M	border 5	3/8 yard	8728-R
Backing		4 yards	8722-RY

Cutting Directions

Note: Read assembly directions before cutting patches. All measurements are cut sizes and include 1/4" seam allowances. A fat 1/4 is an 18" x 20"-22" cut. Fabrics C and M mitered borders include extra length for insurance. WOF designates the width of fabric from selvedge to selvedge (approximately 42" wide).

Fabric A Fussy-cut (1) square 19 1/2"

Fabric B Cut (2) squares 9", cut in half diagonally to make 4 half-square triangles

Fabric C Read step 5 before cutting.
Fussy-cut (7) strips 6 1/2" x WOF, cut crosswise and pieced (as shown on quilt) to make 4 borders 6 1/2" x 64 1/2"
Or fussy-cut (4) border strips 6 1/2" x 64 1/2", cut lengthwise (direction of stripe will be parallel to quilt)

Fabric D Cut (1) square 9 1/4" cut in half diagonally twice to make 4 quarter-square triangles

Fabric E Cut (12) rectangles 4 1/2" x 8 1/2", cut lengthwise

Fabric F Cut (4) rectangles 4 1/2" x 10 1/2"
Cut (8) rectangles 4 1/2" x 8 1/2"
Cut (4) rectangles 4 1/2" x 6 1/2"

Fabric G Cut (2) squares 9 1/4", cut in half diagonally twice to make 8 quarter-square triangles

Fabric H Cut (2) borders 3" x 24 1/2"
Cut (2) borders 3" x 19 1/2"

Fabric I Cut (2) squares 9 1/4", cut in half diagonally twice to make 8 quarter-square triangles

Fabric J Cut (12) squares 4 1/2"

Fabric K Cut (7) strips 2 1/2" x WOF for binding

Fabric L Cut (12) squares 4 1/2"

Fabric M Cut (4) borders 1 1/2" x 52 1/2"

Backing Cut (2) panels 35" x 70", pieced to fit quilt top with overlap on all sides

Making the Quilt

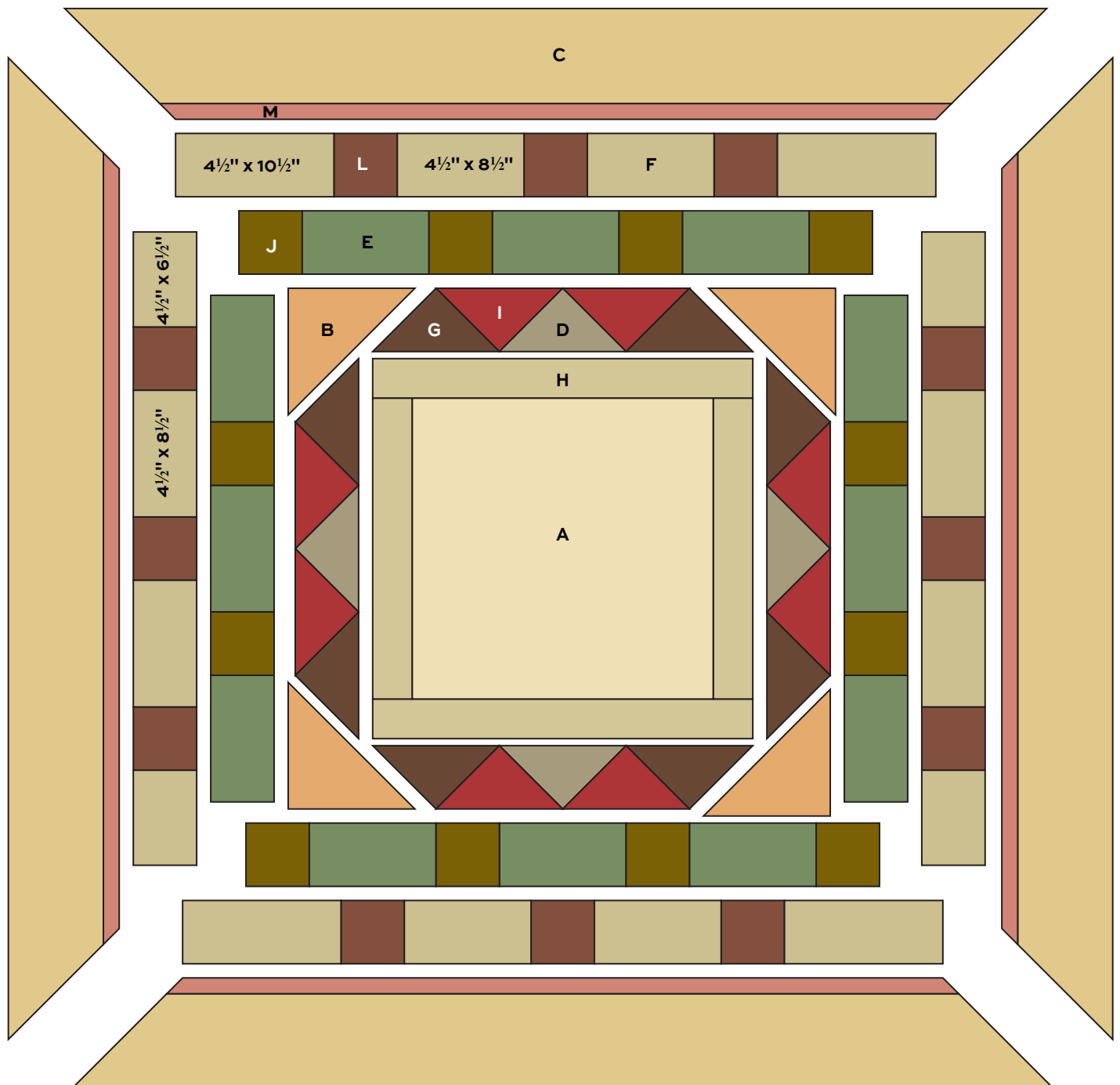
1. Refer to the quilt diagram for the following steps. Join Fabric H strips to the center Fabric A square, sides on first.
2. Mark the sewing lines on the wrong side of the Border 2 triangles. Matching sewing lines, join 1 Fabric D, 2 Fabric G, and 2 Fabric I triangles to make a border. Make 4 alike. Sew borders to the quilt center. Sew Fabric B half-square triangles to each corner. Fabric B triangles are slightly larger than required, so trim the quilt to 32 1/2" square if needed.
3. Join 3 Fabric E rectangles and 2 Fabric J squares to make a border 3. Make 4 borders alike. Sew 2 borders to opposite sides of the quilt center. Sew J squares to ends of remaining borders and sew to the top and bottom.
4. Join appropriate Fabric F rectangles and Fabric L squares to make 2 side border 4. Sew to sides of the quilt. Join Fabric F and L patches to make the top and bottom border 4. Sew to the quilt.

Primarily Patchwork Quilt

- If you want the printed stripe to be perpendicular to the quilt as shown, fussy-cut the Fabric C borders crosswise from the same part of the print. It doesn't matter where you cut as long as all strips are the same. Join strips to make the lengths needed, matching the print so the design looks continuous. If you want the printed stripe to be parallel with the sides of the quilt, fussy-cut borders lengthwise from the same part of the print.
- Join fabric M strips to the Fabric C strips to make a border unit. Sew the border units to the quilt, starting and stopping stitching $\frac{1}{4}$ " from the quilt's raw edge. Miter the corners and trim the excess.

Finishing the Quilt

- Layer the quilt with batting and backing and baste. Quilt in the ditch around borders and block patches. Quilt around the printed motifs in the center square and outer border. Bind to finish the quilt.



Quilt Diagram

Maling Road

BY DI FORD-HALL



8717-B



8717-R*



8718-BR



8718-NR



8718-RB*



8719-BE



8719-NT*



8719-R



8720-B



8720-N*



8720-RY



8721-B*



8721-N



8721-RY



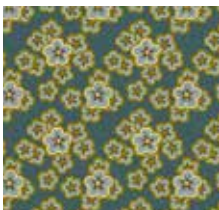
8722-BE*



8722-NT



8722-RY*



8723-B



8723-N*



8724-R*



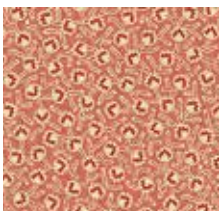
8724-RN*



8725-B



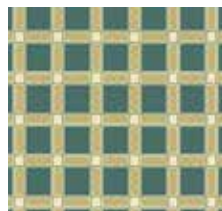
8725-N*



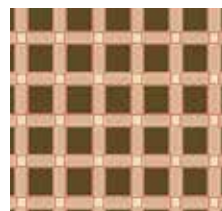
8726-R



8726-N*



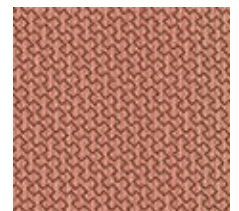
8727-B



8727-NR*



8728-B



8728-R*

*Indicates fabrics used in quilt pattern. Fabrics shown are 25% of actual size.

andover



makower uk
The Hanley Studio

Free Pattern Download Available

1384 Broadway New York, NY 10018
Tel. (800) 223-5678 • andoverfabrics.com